

# X628-C

## 3-inch Fingerprint Time & Attendance Terminal



The firmware of X628-C has been upgraded to the New Firmware. It brings many new experiences, including the new stunning GUI, rock-solid stability, faster matching speed and better expandability.

Users can easily manage data by networking X628-C via RS232/485, TCP/IP, and USB-host. Most importantly, all the functions can still operate in a networking state. X628-C is compatibility with various types of USB flash disks, ADMS and former SDK. It also supports data backup and retrieve to avoid the risk of accidental deletion.

It promotes the fingerprint time & attendance management to the next level. You can get the best of benefits from the X628-C.

### Feature

#### Remarkable user experience

- Intuitive and stunning UI designed with the most popular and internationalized factor.
- Interface operation adopts modularized hierarchical design. Simpler, Better and More logical.
- Faster matching speed: less than 0.5 second.

#### Excellent expandability

- Easy to extend functions and customize customers' demand.

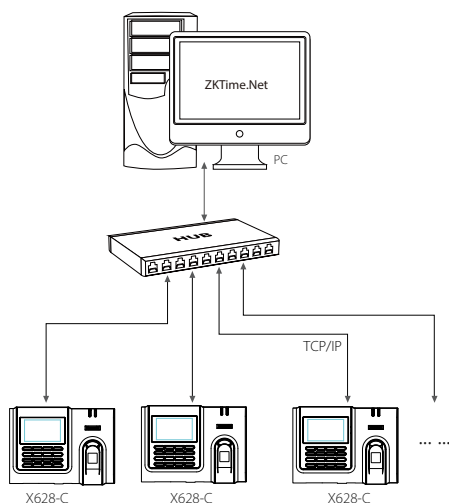
#### Enhanced features and performance

- User validity settings.
- Data backup and retrieve.
- Advanced User ID consisted of letters and numbers.
- Chip encryption for firmware protection.
- More flexible menu configuration: double line text display.
- Built-in Serial and Ethernet ports

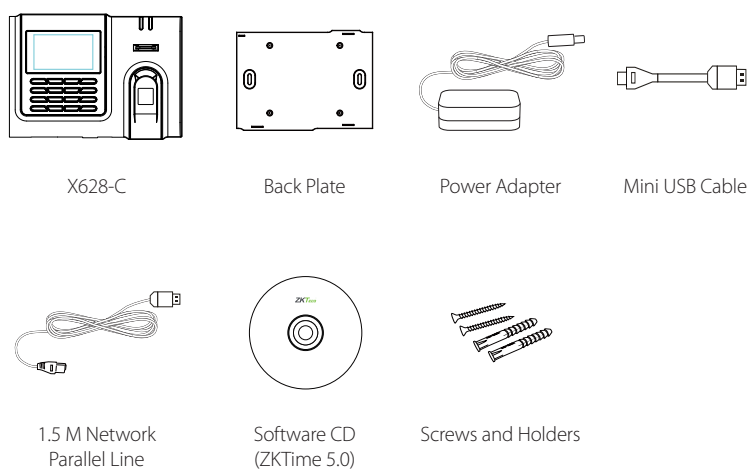
# Specifications

<b>Fingerprint Capacity</b>	3000
<b>ID Card Capacity</b>	10,000 (Optional)
<b>Record Capacity</b>	100,000
<b>Display</b>	3-inch Screen
<b>Communication</b>	RS232/485, TCP/IP, USB-host
<b>Standard Functions</b>	Workcode, SMS, DST, Scheduled-bell, Self-Service Query, Automatic Status Switch Webserver, External Printer, 5 digit user ID, Multiple Verify Mode
<b>Optional Functions</b>	ID/Mifare/HID, Photo ID,ADMS, Webserver, External Bell and Printer
<b>Software</b>	ZKTime 5.0 (Free), ZKTime. Net
<b>Power Supply</b>	DC 5V 0.8A
<b>Verification Speed</b>	≤0.5 Sec.
<b>Operating Temp.</b>	0 °C- 45 °C
<b>Operating Humidity</b>	20%-80%
<b>Dimension</b>	190 × 135.8 × 51.5mm (Length × Width × Thickness)
<b>Net Weight</b>	0.9 kg

# Configuration



# What's in the Box



ZKTeco Inc.  
E-mail: sales@zkteco.com  
www.zkteco.com

© Copyright 2014. ZKTeco Inc. ZKTeco Logo is a registered trademark of ZKTeco or a related company. All other product and company names mentioned are used for identification purposes only and may be the trademarks of their respective owners. All specifications are subject to change without notice. All rights reserved.

